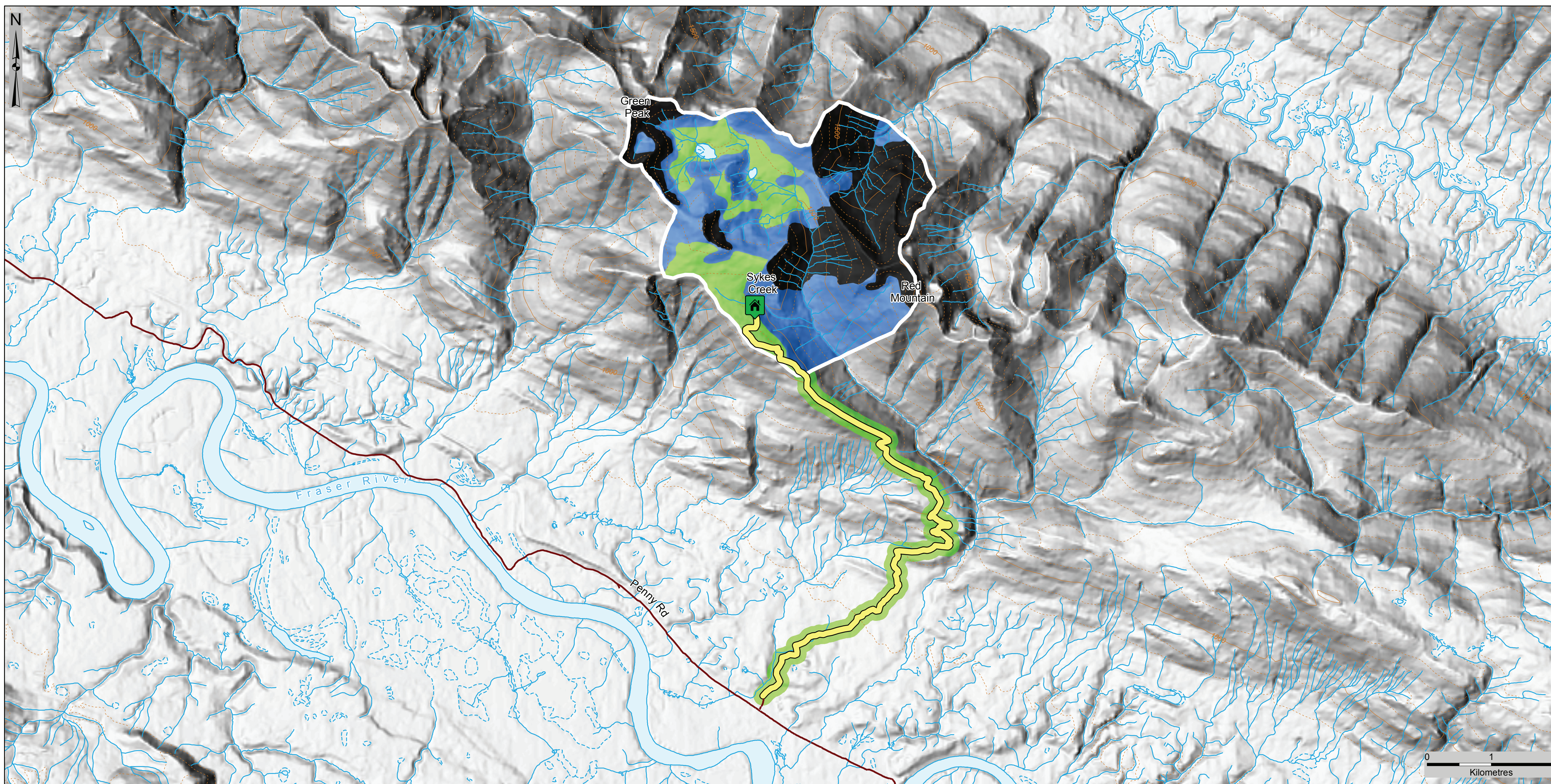


# YOU ARE HEADING INTO AVALANCHE TERRAIN



## AVALANCHE TERRAIN RATINGS

### SIMPLE

Low angle or primarily forested with few terrain traps. Many options to eliminate risk.

### CHALLENGING

Well defined avalanche paths, start zones or terrain traps. Careful routefinding required to reduce or eliminate risk.

### COMPLEX

Multiple overlapping avalanche paths or large expanses of steep open terrain. Minimal options to reduce risk.



CABIN



DECISION POINT



PARKING



AVALANCHE PATH



ROAD/TRAIL



TERRAIN RATED

**Use at your own risk:** Even when no critical factors are observed and in simple terrain, avalanche risk can exist and may result in injury or death. Use of the information provided here is not a guarantee of safety.

## CRITICAL CONDITIONS THAT INCREASE RISK

**Slab Avalanches:** Signs of slab avalanches in the past 48 hours.

**Persistent Slabs:** : Check the Avalanche Canada blog and consult with local experts to assess if persistent slab avalanches are a problem.

**Instability Signs:** Cracking, “whumpfs” and drum-like sounds.

**Snow, Wind or Rain in the Past 48 Hours:** More than 30cm new snow, significant wind transport, or rain.

**Warming:** A recent rapid rise to near 0°C. Wet surface snow due to sun, warm temperatures, or rain.

## USE TERRAIN TO MANAGE RISK

**Simple:** Lowest risk terrain. Recommended when critical conditions exist and for those with low risk tolerance.

**Challenging:** Moderate risk terrain. Travel here if you’re willing to accept some risk and no critical conditions exist.

**Complex:** High risk terrain. Suitable when no critical conditions exist and if you’re willing to accept increased risk.

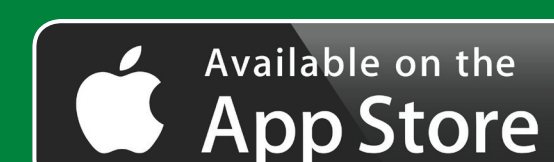
**Terrain Traps:** At all times, minimize or avoid exposure to gullies, cliffs, sudden transitions from steep to flat, and open water.

## MORE INFORMATION: AVALANCHE.CA

Get avalanche training: [avalanche.ca/training](https://avalanche.ca/training)

Mountain Information Network: Anyone can share riding, snow and weather conditions with this free public app.

Get the Avalanche Canada app:



## GET THE GEAR

Everyone in your party needs the **essential gear: an avalanche transceiver, probe and shovel**. Airbag packs can increase the probability of survival but do not replace essential gear. All gear must be well maintained and tested regularly. Get rescue training and practice before you go.



Avalanche  
Canada



Recreation Sites  
and Trails BC